



Coventry BF 0251(49)

Public Information Presentation

Vermont Route 14 Bridge 132 Replacement - Coventry, VT

March 18, 2024

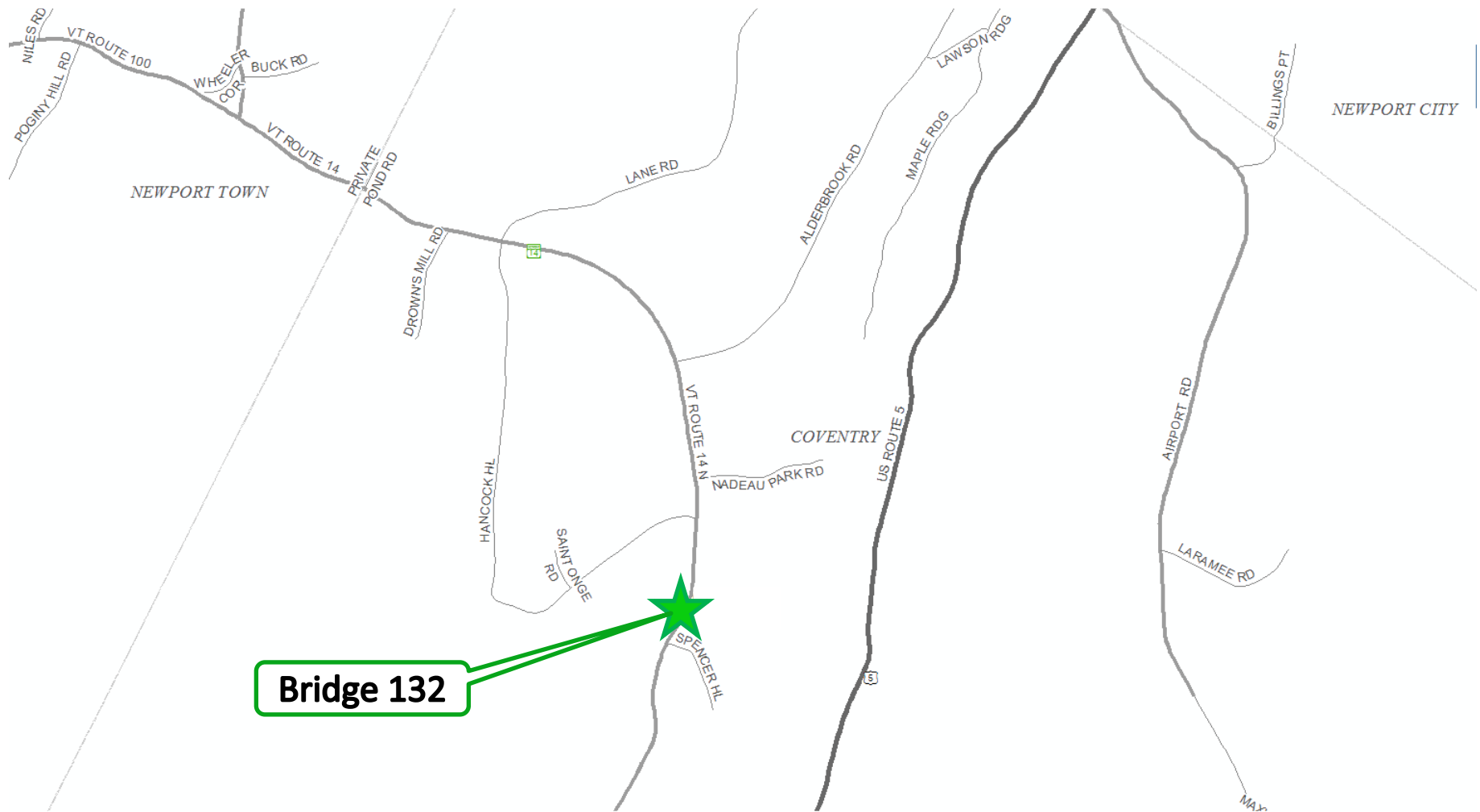
Project Team

- Bob Klinefelter, PE
VTrans
Project Manager
- Ryan Corkins
VTrans
Resident Engineer
- Stephen Coley, PE
VTrans
Lead Design Engineer
- Kevin Densmore
J. Hutchins, Inc.
Construction Contractor
- Chris Mooney
VTrans
Design Engineer
- Sophia Schintzel
WSP USA Inc.
Public Information Specialist

Agenda

- Project Overview
- Existing Conditions
- Proposed Structure
- Traffic Impacts/Detour
- Schedule
- Public Outreach
- Questions

Project Overview



Location Map

Project Overview

- Replacement of Bridge 132 on VT Route 14
- J. Hutchins, Inc. was awarded the contract in December 2023
- 60-hour VT Route 14 closure with detour
- Total Construction Cost Estimate: \$1,462,789.45
- Construction was planned for summer 2025, moved up due to condition downgrade



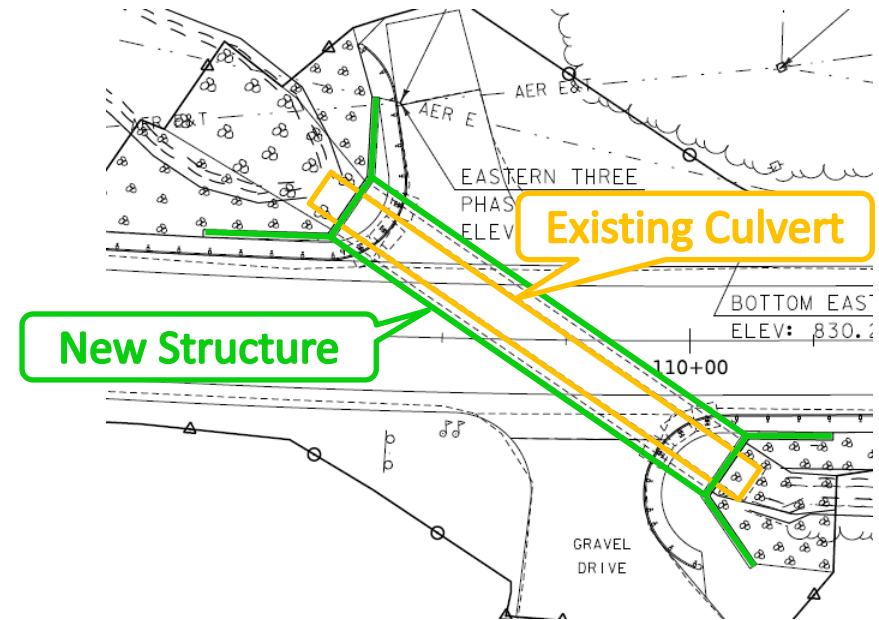
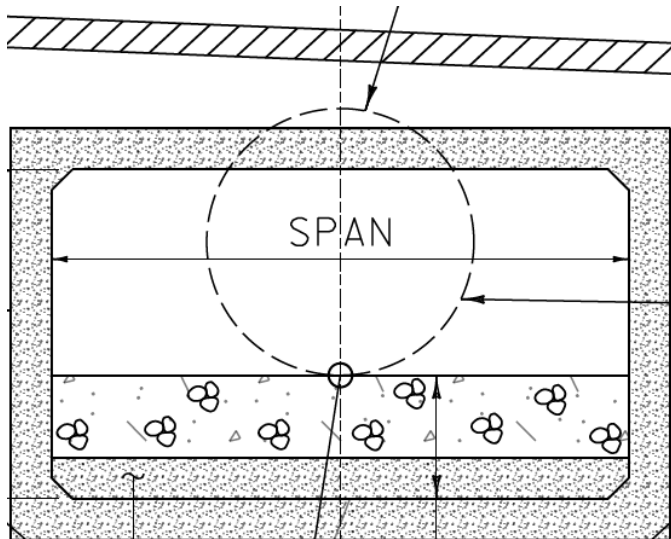
Existing Conditions

- Roadway Classification – Major Collector
- Bridge Type – 8' Span
Corrugated Galvanized Metal
Plate Pipe Arch
- Culvert Length – 108 feet
- Fill Over Culvert – 4 feet
- Ownership – State of Vermont
- Constructed in 1959



Proposed Structure

- 8'x12' Precast Concrete Box Culvert
- Culvert Length – 93.5'



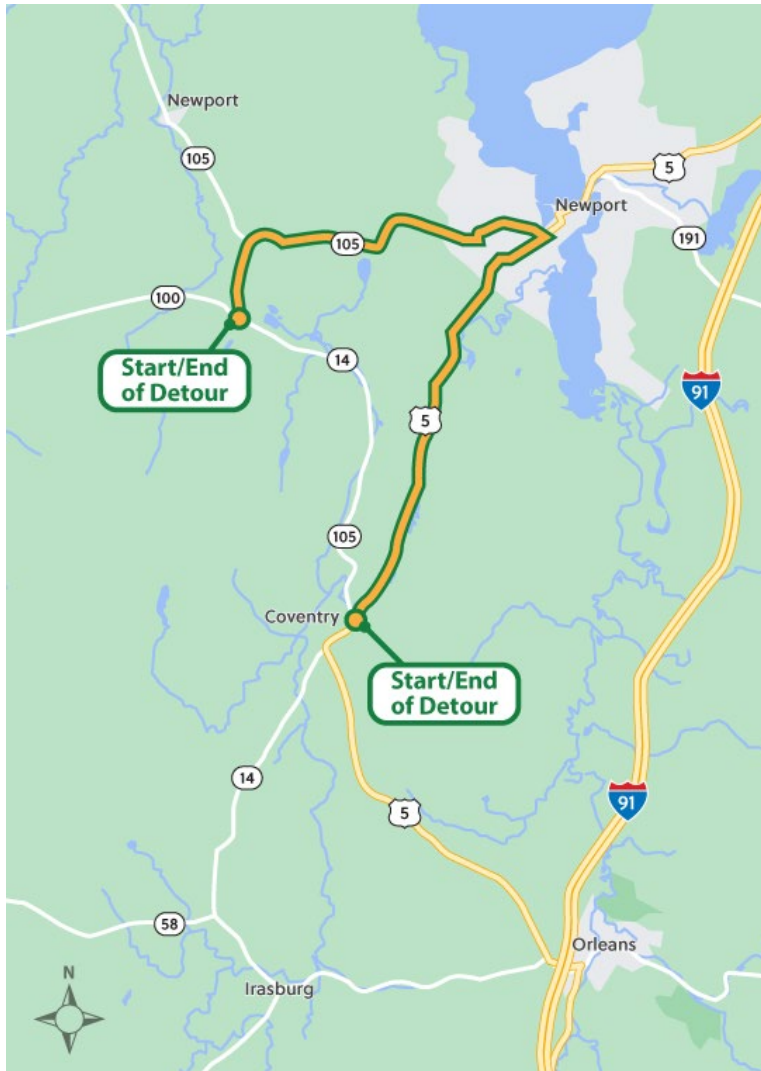
- 2' Deep Natural Stream Bottom Material Inside Culvert
- Clear Opening – 6' high x 12' wide

Traffic Impacts

- 60-hour weekend closure with an off-site detour, tentatively scheduled for the weekend of Friday, April 12 at 6 p.m. to Monday, April 15 at 6 a.m.
- Passenger Vehicle signed detour:
 - VT 14, VT 105, US 5
- Truck specific detour (signed at key intersections only):
 - VT 14, VT 100, VT 58, US 5

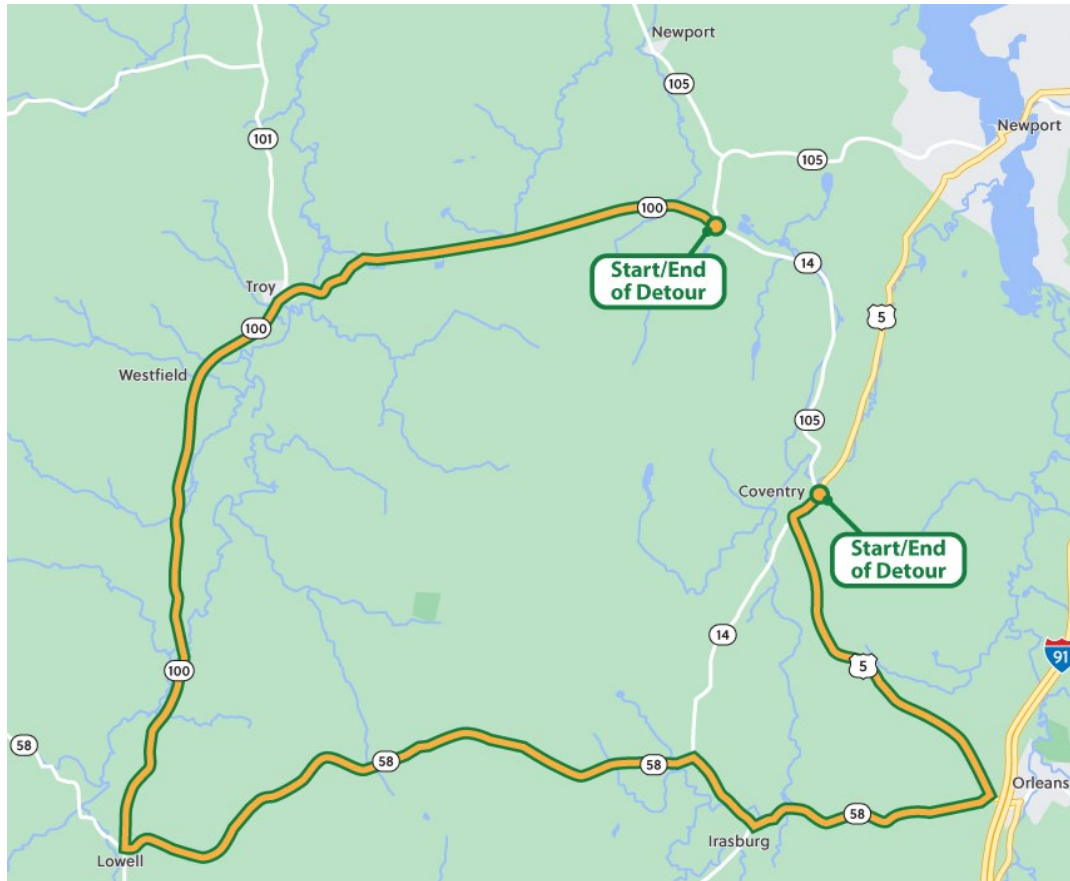


Signed Passenger Vehicle Detour



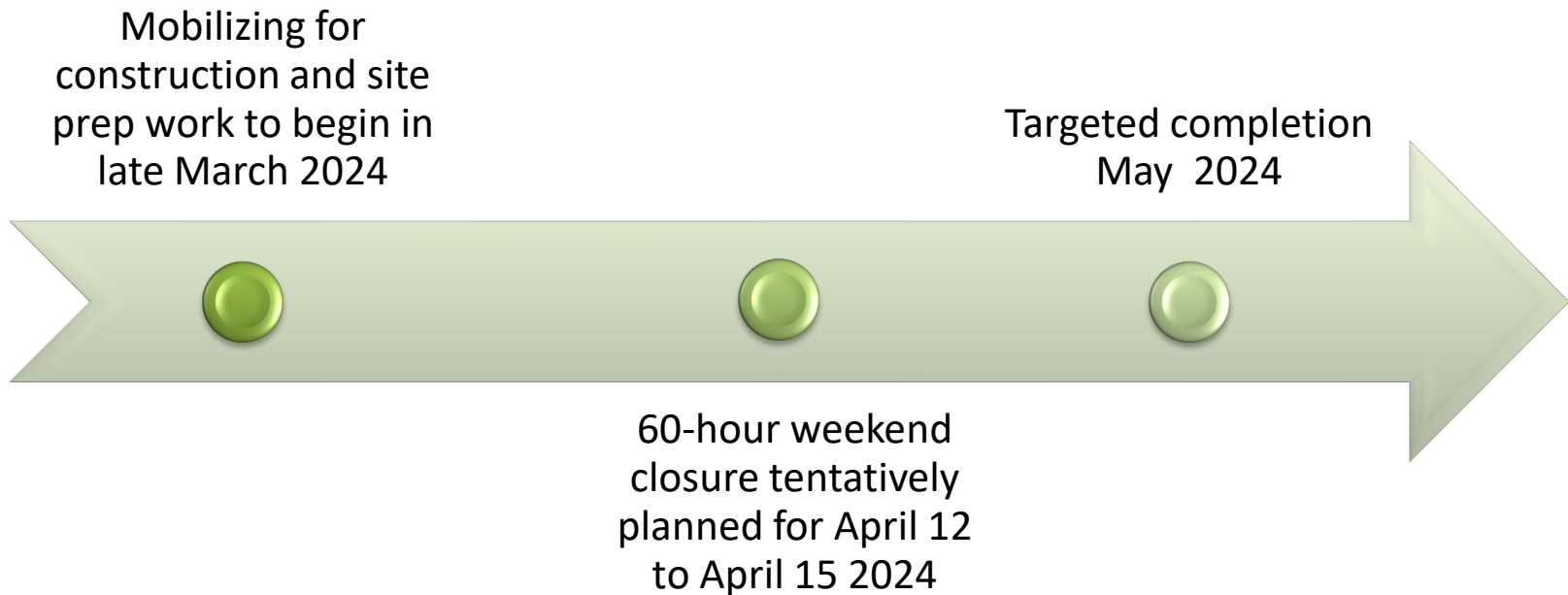
- Passenger Vehicle detour along:
 - VT 14
 - VT 105
 - US 5
- Through Route: 4.7 miles
- Detour Route: 9.8 miles
- End-to-end Distance: 14.5 miles
- Added Distance: 5.1 miles

Truck Specific Detour



- Truck Specific detour along:
 - VT 14
 - VT 100
 - VT 58
 - US 5
- Through Route: 4.7 miles
- Detour Route: 31.9 miles
- End-to-end Distance: 36.6 miles
- Added Distance: 27.2 miles

Construction Schedule



Public Information

- Use the QR code to signup to receive weekly Construction Updates
- Have questions during construction?
Contact the project's Public Information Consultant, Sophia Schintzel
 - Email: sophia.schintzel@wsp.com
 - Phone: 781-400-8263
- View the VTransparency Fact Sheet:
<https://resources.vtrans.vermont.gov/FactSheet/default.aspx?pin=21B025>



Thank you!

QUESTIONS?